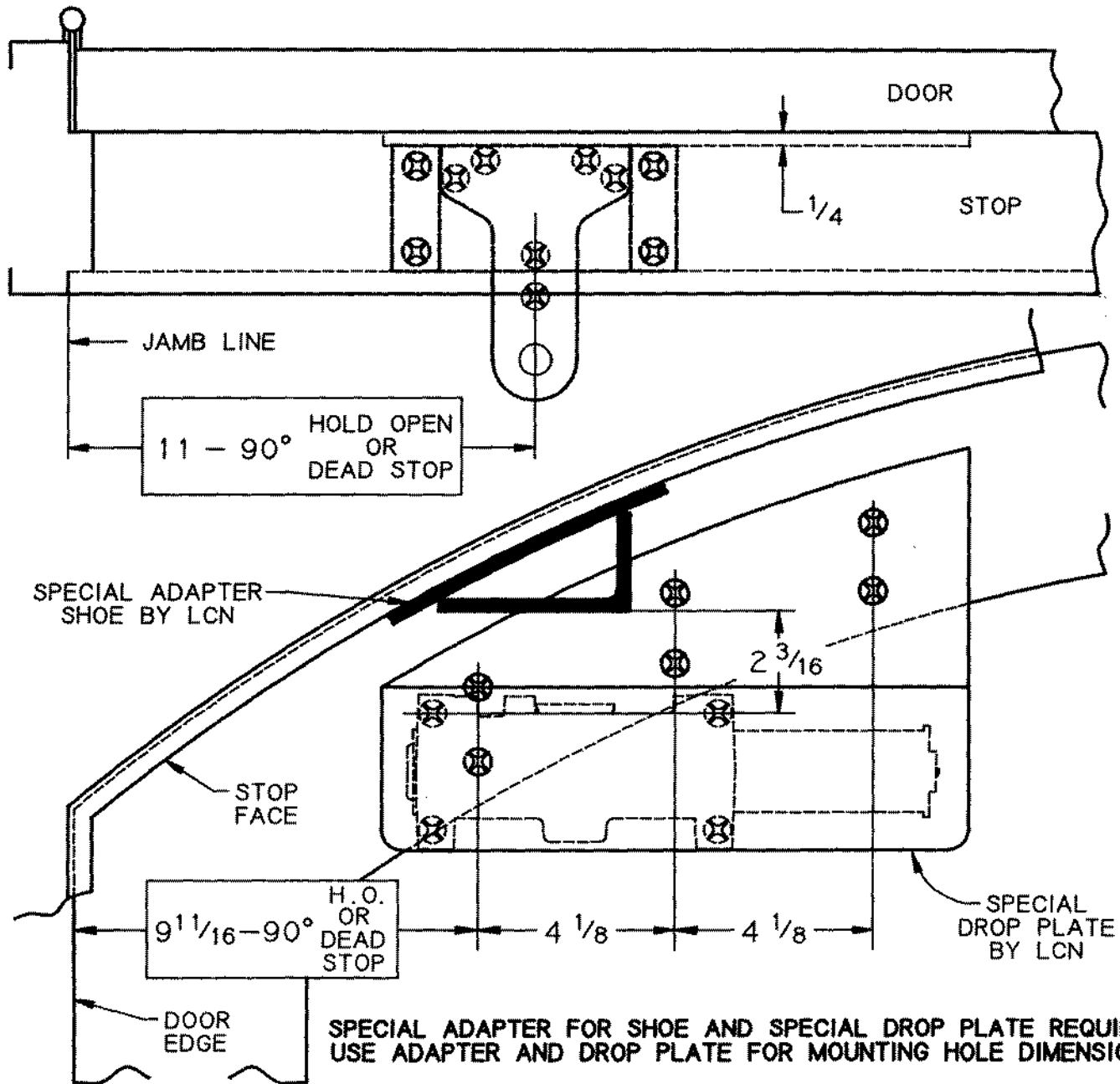


ST-2480

SPECIAL STOP FACE CUSH 18 APPLIES TO:

4112-CUSH
4113-CUSH
4114-CUSH
4115-CUSH
4116-CUSH
4110*N*CUSH

90° HOLD OPEN & DEAD STOP
OR
DEADSTOP ONLY
DELAYED ACTION OPTIONAL



- NOTES - 1 - CLOSER SIZE 12 1/4 x 3 1/2 x 2 5/32
2 - LEFT HAND DOOR & CLOSER SHOWN, RIGHT HAND OPPOSITE.
3 - MINIMUM DISTANCE BETWEEN 2 DOORS ON THE SAME JAMB IS 5 1/2
4 - REINFORCING PER. ANSI/SDI-100 RECOMMENDED FOR HOLLOW METAL DOOR AND FRAMES.

DO NOT SCALE				LCN CLOSERS	
NO	REVISIONS	BY	DATE	Part of worldwide Ingersoll-Rand	
				SMOOTHEE CLOSER STOP FACE MOUNTED CUSH-N-STOP & ON A SPECIAL 18 DROP PLATE	
				BY 10/17/89 DRM	4110 CUSH
				APPR.	